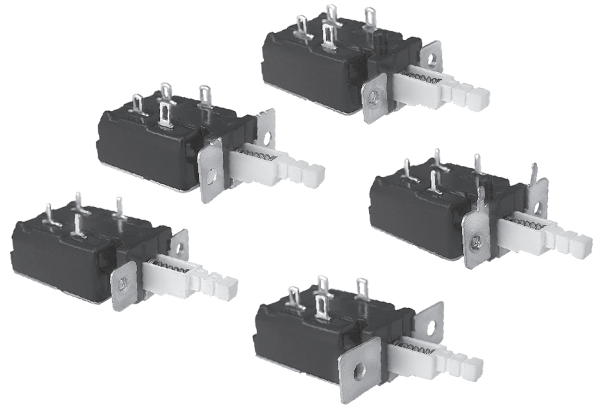


## KDC-A11型電源開關系列 Power switch series

### ◆ 特點和用途 Characteristics and usage

- 具有快速動作的特點  
Quick action
- 扁平形，結構緊湊，體積小。  
Flat type, tight configuration, small volume.
- 可承受大電流和浪涌電流  
Endure big current and inrush current
- 廣泛應用於彩電、音頻裝置、計算機及外圍設備，儀器儀表、電子設備等。  
Widely used in color TV, audio device, computer and its peripheral equipment, apparatus and instrument, electronic equipment etc.



### ◆ 技術特性 Technical Characteristics

項目 Item	特性值 Value	
環境溫度 Environment temperature	-10 ~ +85℃	
相對濕度 Relative humidity	95%, 40℃	
額定值 Ratings	TV-8 125VAC, 10GPA125/250VAC 10A125/250VAC, 4A/128A250VAC, 8A/128A250VAC	
工作行程/全行程 Operating travel/full travel	2.5mm/3.5mm	
動作力 Operating force	3.5 ~ 7.5N	
電路 Circuit	雙刀單擲 DPST	
絕緣電阻 Insulation resistance	≥100MΩ	
接觸電阻 Contact resistance	≤50mΩ	
耐電壓 Test voltage	同極不相接端子間 Between each terminals of the same polarity	AC2000V
	帶電金屬零件與地(外殼)之間、接綫端與不帶電金屬件之間 Between current-carrying metal parts and ground(case), and between each terminal and non-current-carrying metal parts.	AC4000V
電氣壽命 Electrical life	10,000次/cycles	
質量 Weight	約12.1g Approx. 12.1g	
安全認證 Safety approvals	UL、CUL、VDE、ENEC、SEMKO、DEMKO、NEMKO、FIMKO、CE、EK、CQC	

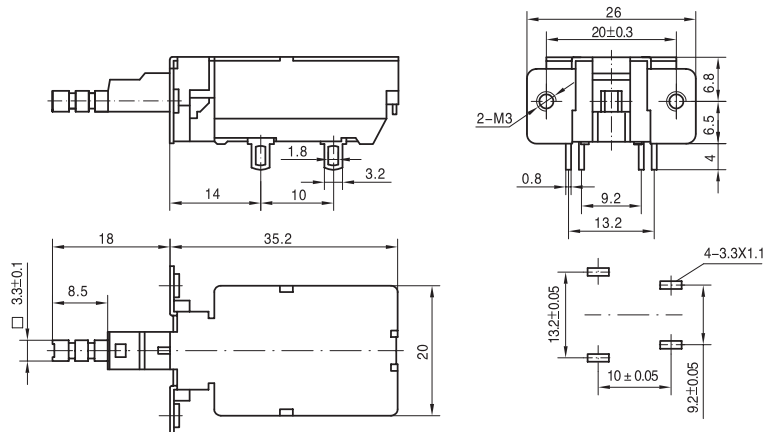
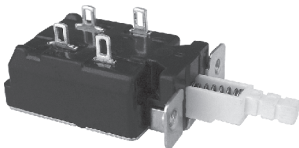
◆ 型號規格命名及含義 Model number legend and meanings

KDC-A11-□ □ □ □  
1 2 3 4

<p><b>1</b> 端子類型 Terminal types</p>	<p>1: 焊接端子 Solder terminal</p> <p>2: PCB端子 PCB terminal</p> <p>3: 快接端子 Quick-connect terminal</p>	<p><b>3</b> 蓋板支腳和 塑殼定位柱 Frame tab and case fix pole</p>	<p>0: 無支腳, 無定位柱 No frame tab, no case fix pole</p> <p>1: 有支腳, 有定位柱 Frame tab, case fix pole</p> <p>2: 無支腳, 有定位柱 No frame tab, case fix pole</p> <p>3: 有支腳, 無定位柱 Frame tab, no case fix pole</p>
<p><b>2</b> 安裝孔類型 Mounting hole types</p>	<p>0: 無安裝孔 No mounting hole</p> <p>1: 螺孔M3 Screw hole M3</p> <p>2: 光孔Φ3.2 HoleΦ3.2</p>	<p><b>4</b> 附加代號 Additional code</p>	<p>用A、B、C……表示與基本 型有差異或有特殊要求 A,B,C ……indicate different or special requirements with basic type</p>

◆ 外形和安裝尺寸 Outline and mounting dimensions

KDC-A11-110



微動開關系列  
MICRO SWITCH SERIES

KW3A

KW4A

KW4A(S)

KW10

MS1

MS2

MS3

MS5

MS10

防水開關系列  
WATERPROOF SWITCH SERIES

WS1

WS1L

WS2

WS3

WS4

WS5

WS6

WS7

電源開關系列  
POWER SWITCH SERIES

KDC-A11

KDC-A04

PS4

PS5

PS6

RS1

RS2

RS3

其他開關系列  
OTHER SWITCH SERIES

SP02

KXZ2

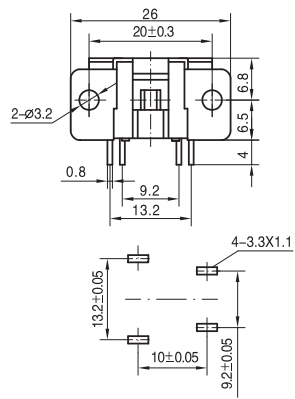
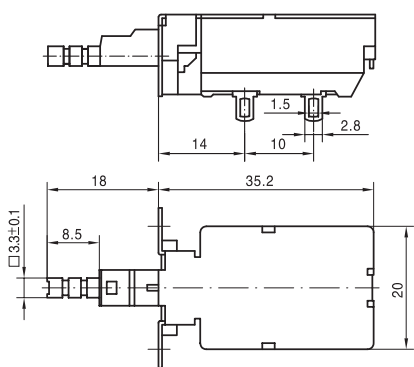
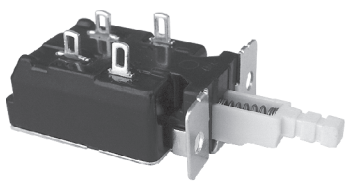
PRS1

◆ 外形和安裝尺寸 Outline and mounting dimensions

微動開關系列  
MICRO SWITCH SERIES

- KW3A
- KW4A
- KW4A(S)
- KW10
- MS1
- MS2
- MS3
- MS5
- MS10

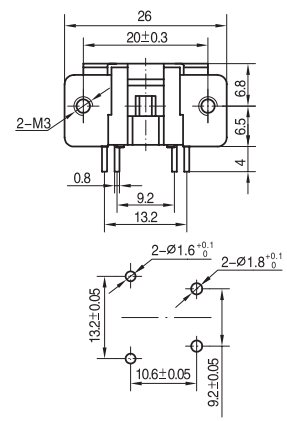
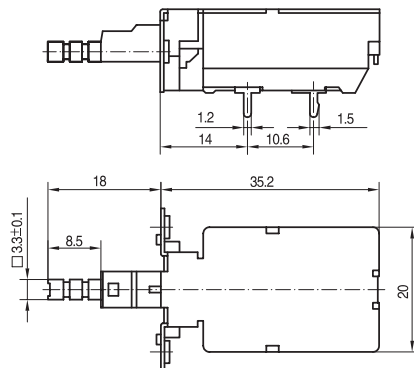
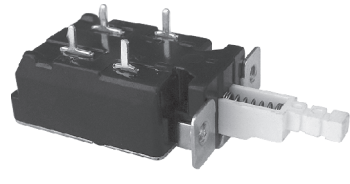
KDC-A11-120



防水開關系列  
WATERPROOF SWITCH SERIES

- WS1
- WS1L
- WS2
- WS3
- WS4
- WS5
- WS6
- WS7

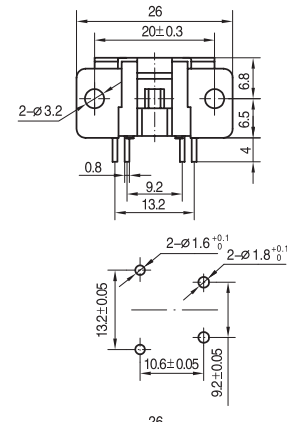
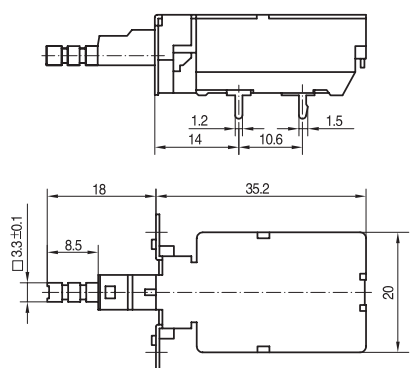
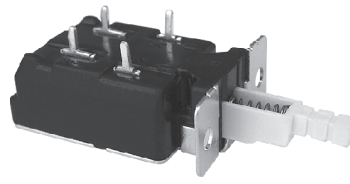
KDC-A11-210



電源開關系列  
POWER SWITCH SERIES

- KDC-A11
- KDC-A04
- PS4
- PS5
- PS6
- RS1
- RS2
- RS3

KDC-A11-220



KDC-A11-221

